



# MCM OIL TOOLS

Q U A L I T Y • D E L I V E R Y • P R I C E

*Meets or  
Exceeds API 6A  
Standards &  
NACE MR-01-75*

*Internal  
Parts are  
Completely  
Interchangeable  
with CIW*

## Back Pressure Valve Cameron® Style “H & HM” Type



- Manifolds
- Gate Valves
- Back Pressure Valves
- Choke and Control Panels

10422 W. Gulf Bank Rd. • Houston, Texas 77040

Tel: 713-541-1212 • Fax: 713-541-4664

E-Mail: [sales@mcmoiltools.com](mailto:sales@mcmoiltools.com) • Website: [www.mcmoiltools.com](http://www.mcmoiltools.com)

Cameron® and SWACO® are registered trademarks of companies not affiliated with MCM in any way



# MCM OIL TOOLS

Q U A L I T Y • D E L I V E R Y • P R I C E

## Cameron® Type “H & HM” Back Pressure Valve

- The Cameron type “H” back pressure valve safely seals tubing pressure to 20,000 psi. BPV are used during the inflation of Christmas Trees, BOP removal and to prevent backflow of fluid into tubing.
- Back pressure valves reduce downtime and operating cost by allowing for repairs without killing the well.
- Sizes available from 1-1/4” to 6-5/15” for BPV + TWC
- The “H” Two-Way style Check Valve can be installed in the tubing hanger for testing up to 15,000 psi.
- Material options of 4130, 17-4 and Inconel.



**\* We also provide installation, removal tools and test plugs\***

**10422 W. Gulf Bank Rd. • Houston, Texas 77040**

**Tel: 713-541-1212 • Fax: 713-541-4664**

**E-Mail: [sales@mcmoiltools.com](mailto:sales@mcmoiltools.com) • Website: [www.mcmoiltools.com](http://www.mcmoiltools.com)**

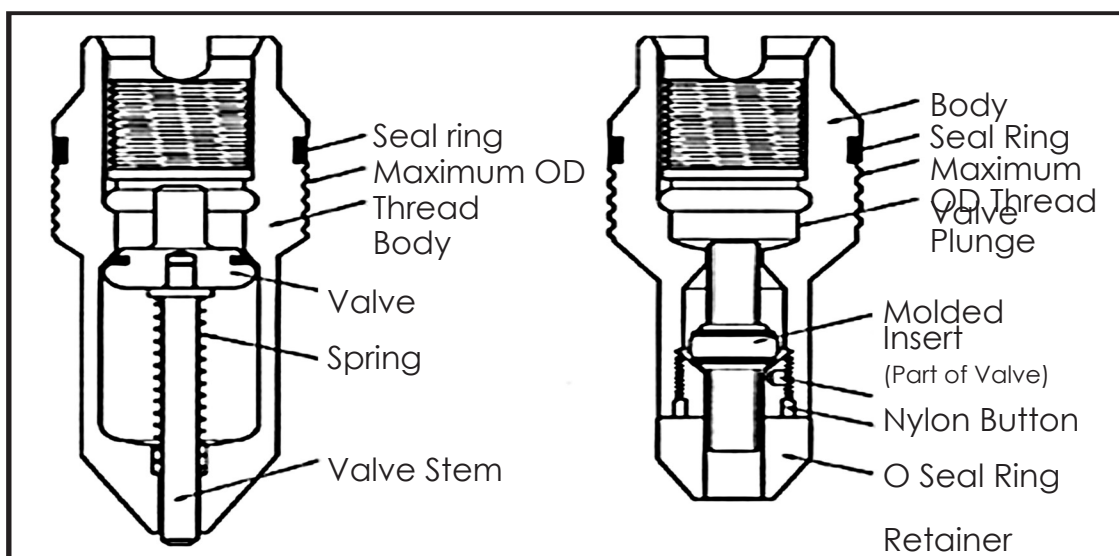
*Cameron® and SWACO® are registered trademarks of companies not affiliated with MCM in any way*



# MCM OIL TOOLS

Q U A L I T Y • D E L I V E R Y • P R I C E

## Cameron<sup>+</sup> Type 'H' Back Pressure Valve & 'HM' Two-Way Check Valve



Nominal Size	Maximum OD	H Back Pressure Valve		H Two-Way Check Valve		Tubing Hanger		Christmas Tree	
		OEM PART NUMBERS	MCM PART NUMBERS	OEM PART NUMBERS	MCM PART NUMBERS	Tubing OD	Min Bore BPV Threads	Min Vertical Bore	X-mas Tree Min Drift Dia.
1 1/4"	1.356"	30246-08	BPVH114DD	41612-01	BPVH-TW114DD	1.660"	1.286"	—	—
1 1/2"	1.605"	30246-02	BPVH112DD	41612-02	BPVH-TW112DD	1.900"	1.525"	1-5/8"	1.610"
1 3/4"	1.775"	30246-06	BPVH134DD	41612-03	BPVH-TW134DD	2.063"	1.695"	1-13/16"	1.795"
2"	2.020"	30246-01	BPVH200DD	41612-04	BPVH-TW200DD	2.375"	1.940"	2-1/16"	2.030"
2 1/2"	2.485"	30246-03	BPVH212DD	41612-05	BPVH-TW212DD	2.875"	2.405"	2-9/16"	2.500"
3"	3.030"	30246-04	BPVH300DD	41612-06	BPVH-TW300DD	3.500"	2.950"	3-1/8"	3.060"
3 1/2"	3.530"	30246-07	BPVH312DD	41612-07	BPVH-TW312DD	4.000"	3.450"	4-1/16"	3.580"
4"	3.980"	30246-05	BPVH400DD	41612-08	BPVH-TW400DD	4.500"	3.900"	4-1/16"	4.020"
4-3/32"	4.085"	30246-10	BPVH432DD	41612-09	BPVH-TW432DD	-----	-----	-----	-----
4-3/8"	4.370"	---	BPVH438DD	41612-32?	BPVH-TW438DD	-----	-----	-----	-----
5"	5.010"	30246-13	BPVH500DD	41612-50	BPVH-TW500DD	----	4.930	----	----
6"	5.980"	---	BPVH600DD	---	BPVH-TW600DD	----	5.900	----	----
6-1/16"	6.062"	---	BPVH616DD	---	BPVH-TW616DD	-----	-----	-----	-----
6-5/16"	6.312"	30246-20	BPVH6516DD	41612-36	BPVH-TW6516DD	----	-----	-----	-----

4130 Alloy for AA-General Service and DD-Sour Service\*

17-4PH SS for BB-General Service, CC-General Service, EE-Sour Service\* and FF-Sour Service\*

Inconel 718 for HH-Sour Service\*

\* As defined by NACE Standard MR-01-75.

10422 W. Gulf Bank Rd. • Houston, Texas 77040

Tel: 713-541-1212 • Fax: 713-541-4664

E-Mail: [sales@mcmoiltools.com](mailto:sales@mcmoiltools.com) • Website: [www.mcmoiltools.com](http://www.mcmoiltools.com)

Cameron® and SWACO® are registered trademarks of companies not affiliated with MCM in any way





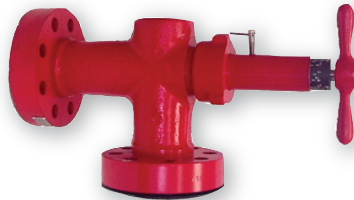
# MCM OIL TOOLS

QUALITY • DELIVERY • PRICE



GATE VALVES

CAMERON® STYLE 'FC' & 'FLS' TYPE



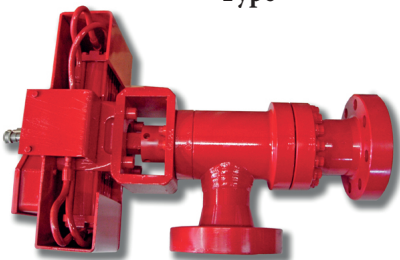
MANUAL CHOKE  
CAMERON® STYLE 'H2' TYPE



CAMERON® Type U Packers  
&  
Top Seals



Back Pressure Valve  
Cameron® Style "H & HM"  
Type



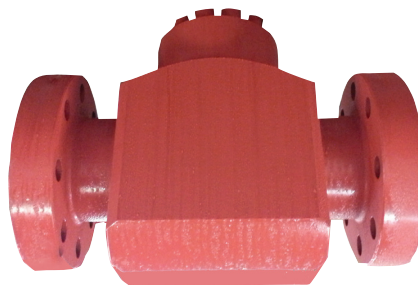
SWACO® CHOKE



HYDRAULIC DRILLING CHOKE  
CAMERON® STYLE



CONTROL PANEL



'MS' STYLE CHECK VALVE  
CAMERON® STYLE



CHECK VALVE  
CAMERON® STYLE 'R' TYPE



10422 W. Gulf Bank Rd. • Houston, Texas 77040

Tel: 713-541-1212 • Fax: 713-541-4664

E-Mail: [sales@mcmoiltools.com](mailto:sales@mcmoiltools.com) • Website: [www.mcmoiltools.com](http://www.mcmoiltools.com)

*Cameron® and SWACO® are registered trademarks of companies not affiliated with MCM in any way*